



COMPANY PROFILE



ZENS International is a B2B specialized company specializing in development and production of cosmeceutical products that can heal skin problems and do skin treatment at the same time. Cosmetic surgery devices such as lifting threads, and cosmetic products such as solution ampoules and micro needle patches which are supplied to major domestics and overseas bio companies and hospitals. We aim to become a champion who is leading the technology and the trend of the cosmeceutical market which is rapidly growing around the world.

Cosmeceutical is a combination of cosmetics and pharmaceuticals, which means combining the medicinal ingredients of proven efficacy with cosmetics. While conventional cosmetics only have a concept of skin care, cosmeceutical products can be considered to focus more on skin improvement.

CONTENTS



Press molded lifting thread that effectively lifts up the sagging skin tissue.

4P



Deoxycholic acid solution that dissolves the fat cells effectively.

8P

Belleza care LIPO SOLUTION



LIPO SOLUTION is an effective solution that made with natural components for dissolving body fats.

9P

Belleza care COLOR THERAPY



COLOR THERAPY is a multi-skin care product for whitening, soothing, and anti-aging.

10P

Belleza care SKIN BOOSTER AMPOULE



SKIN BOOSTER is a functional ampoule for wound healing, whitening, and collagen regeneration

12P



13P

BOTOX ALTERNATIVE

—Wrinkle Patch



~Deep Infusion Wrinkle Care System~



This patch with hundreds of "Micro chip" are made of Hyaluronic acid.

15P



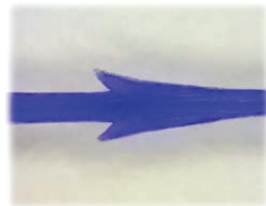
Obtaining an exclusive design patent for Press Molded Wedge Lifting Thread

Manufactured using ZENS patented "Press Molding Technology", it has a larger cog size and higher tensile strength than conventional threads (Cutting Thread Type).

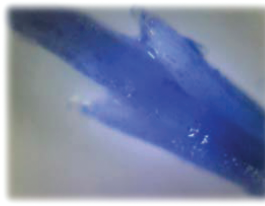
Our molded type threads, when inserted into the human body, does not cause the sort of warping that occurs in the Cutting Thread Type. It is a ZENS' representative hit design with outstanding skin tissue adhesion.

Comparison of absorption of suture between GD LIFT and cutting type thread in human body

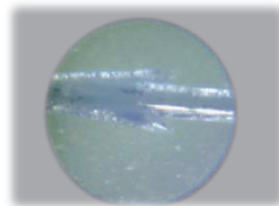
GD LIFT USP 2-0



0 days



30 days

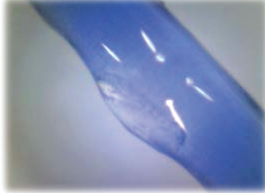


90 days

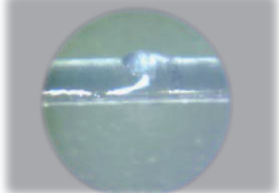
Cutting USP 1-0



0 days



30 days



90 days

A certain amount of time after the PDO lifting thread are inserted into the body, they no longer maintain the lifting effect as the barbs of the cutting threads have already dissolved, whereas the molded type can maintain the effect for a long time because the barb does not disappear.

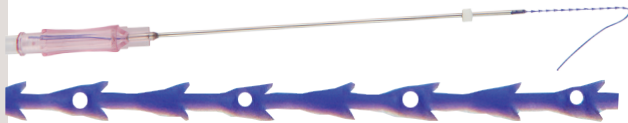
Specs of GD LIFT

Type	No.	Model Number	Needle Gauge	Needle Length	Thread Length	Barbed Thread Length	Barb Direction	Needle Type
MONO Type	1	ZGM2938	29G	38mm	50mm			 L cannula
	2	ZGM2950	29G	50mm	70mm			
	3	ZGM3025U	30G	25mm	52mm			
Cutting Type	1	BCA-18-170	18G 19G	100mm	170mm	102mm		 W cannula
	2	BFC-19-170	19G	100mm	170mm	102mm		
Molding Type	1	BD-18G-S2570NH	18G 19G	100mm	170mm	90mm		 U cannula
	2	BD-18G-M2570NH	18G 19G	80mm	162mm	67mm		
	3	BD-18G-SQ2570NH	18G	100mm	185mm	90mm		
	4	BD-18G-VH2570NH	18G	100mm	170mm	90mm		 O cannula
	5	BD-18G-DC165	18G	100mm	165mm	90mm		
	6	BD-TB-23G30	23G	60mm	30mm			
	7	BD-MS1960L70	19G 21G	60mm	80mm 180mm			 Needle
	8	BD-18G-D410	18G		410mm	360mm		
	9	BD-18G-DN300BN12	21G	120mm	300mm	191mm		



GRAVITY DIMENSION LIFT

BEAUTY BACK IN TIME
TO RE-LOCATE



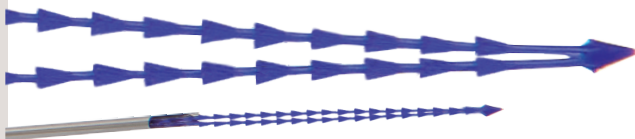
Hole type

The tissue cells enter the holes of the thread and form new cells. At the same time, the holes and cells bond to maintain higher lifting effects and holding force.



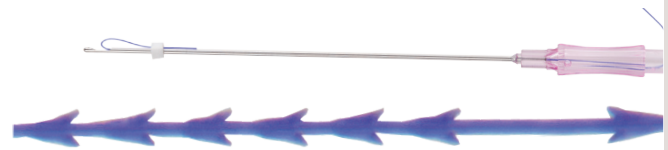
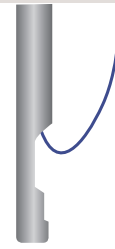
Mesh type

PDO thread is formed by a cylindrical structure of 16 lines and there is no unnecessary movement or spread after treatment. Scaffold also shows volume and elasticity immediately after treatment.



Double cone type

The moled threads can be inserted into a single cannula and two lines of thread can be inserted into the procedure once. This will shorten the treatment time to ensure the convenience of the procedure and can expect double lifting effect.



BI-directional Cog type

This model is a representative model of ZENS, and is a patented design.

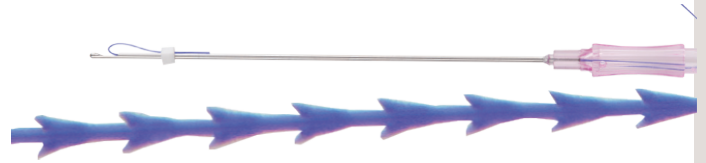


Tube type

The ECM and tissue cells in the dermis quickly fill into the holes of thread to form a new tissue in the skin. These filled ECM and cells further promote skin regeneration to maximize Anti-aging effect.

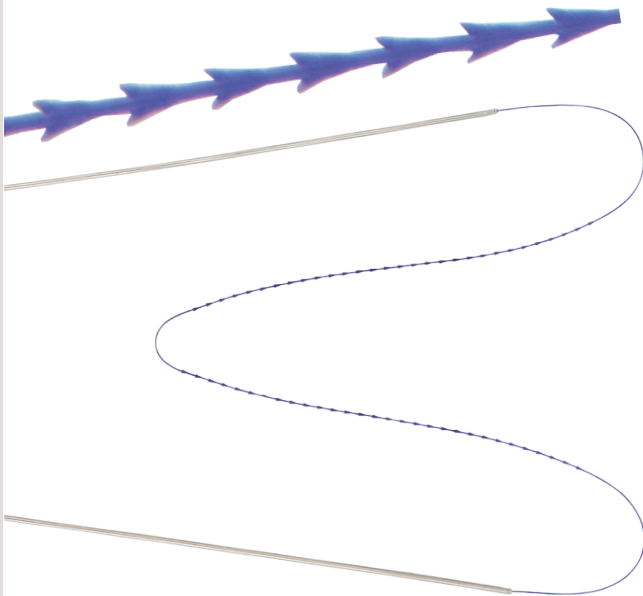


Press Molded Wedge Lifting Thread



Bi-directional Cog type

This is the representative design of the molding threads in ZENS. Cog is the best form of adhesion to skin tissue, and because it is made by pressing cutting with specially machined blades, rather than by melting with high heat, Cog can maintain the tensile strength of the raw material and produce more powerful lifting effects with 10 turns per centimeter.



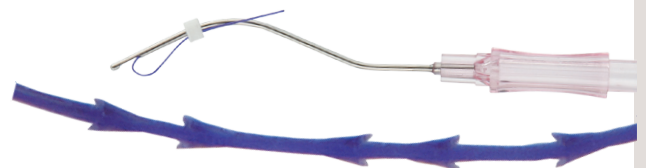
Double needle type

Double needle type is formed by molding Cog thread, which can effectively minimize damage to subcutaneous tissues while maintaining high tensile strength and can make the procedure more convenient.



Zigzag type

The zigzag type has the molding cog crossed in different directions. Therefore, when inserted into the human body, it has excellent grip.



Nose Thread type

A cannula of ZENS fits to anatomical shape of nose. It not only enables to do a procedure on nose tip, but also can be inserted thoroughly on the bridge of the nose. You can expect stable and natural treatment effects.

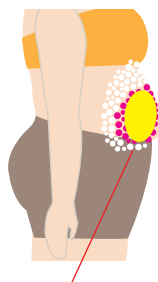
What is DeFAT⁺ Solution?

DeFAT⁺ has an excellent effectiveness on dissolving the fat cells, being composed of Deoxycholic acid and safe ingredients from natural sources.

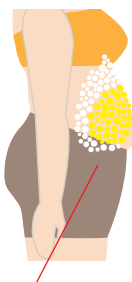
* Deoxycollic acid is an ingredient that is also present in the body's digestive system, which helps to break down fat and absorb it.



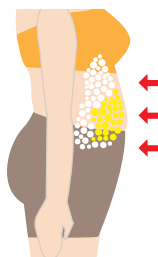
DeFAT⁺ Lipolysis process



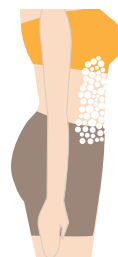
1. Inject
Inject DeFAT⁺ directly to the fat layer.



2. Inflamed Fat Cells
DeFAT⁺ is absorbed to fat cells and inflammation occurs.



3. Dissolving Fat Cells
Fat cells are destroyed through inflammation within few weeks.



4. Fat Cells Removed
Destroyed fat cells are removed permanently through lymphatic circulation.

Dual effects : Adipolysis & Lipolysis

1. Adipolysis + Lipolysis.
2. It gives a permanent effect as the dissolved fat cells will not be regenerated being replaced by collagen.
3. They will be no rebound phenomenon and the fat cells will not be regenerated.
4. It not only reduces the size of fat cells, but also dissolves the fat cells itself.

What is LIPO SOLUTION?

LIPO SOLUTION is an effective solution that made with natural components for dissolving body fats. PPC, the well known lipolysis injection, needs at least 1~3 months and more time to see expected results. In addition, it is hard to go back to daily base after treatment due to pain, edema, bruise, and itchiness. But, LIPO SOLUTION takes about 10 to 15 min only, and it is possible to go back to daily base right after the treatment.



KEY INGREDIENTS



TREATMENT

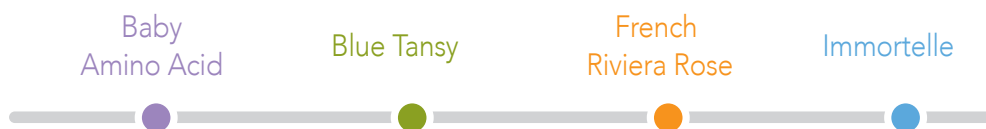
- It depends on each patient conditions, but treating time is about 10~15minutes, and 3 to 4 injections per treatment in every 20 days.
- For facial contouring or double chin treatment, injects 1~4cc for one side treatment.
- Per treatment, inject 0.1 to 0.2cc in the interval of 0.5 to 1cm distance for 3~4 times.

What is COLOR THERAPY?

COLOR THERAPY is a multi-skin care product. It consists of 3 types of ampoules – Blue, Red, Yellow. Red ampoule is for whitening, Blue ampoule is for soothing, and Yellow ampoule is for wrinkle-improving. Each ampoule is made of natural color and ingredients so that it has much more effect than other skin care products.



KEY INGREDIENTS



TREATMENT

- Use each ampoule with MTS Roller or machine.
- After making small holes with MTS device, apply an ampoule on your face.
- Recommend to use each ampoule every week(1 box is for 6-weeks treatment).

KEY INGREDIENTS

BLUE AMPOULE

1. Vit E

- Extraction from embryonic tissue of wheat
- Promote blood circulation
- Anti-inflammatory action

2. Aloe extract

- Skin soothing, moisturizing, regeneration

3. PDRN

- DNA extracted from salmon germ cells
- Licensed as medicines in Europe
- Wound treatment, skin regeneration

4. Blue Tansy Oil

- Rare oil with blue light that can only get 1g from 2,000 blossoms
- Contains 'Kamazulene' ingredients, soothes skin and strengthens anti-inflammatory



BLUE TANSY

RED AMPOULE

1. Vit C

- Whitening action
- A powerful antioxidant
- Stimulation inhibition and anti-inflammatory action

2. Pomegranate extract

- Natural estrogen
- Skin whitening effect
- Good fruit when consumed in facial flushing

3. Tranexamic Acid

- Used as an anti-stain agent in food
- Whitening and dullness improvement
- Skin soothing and anti-inflammatory

4. Niacinamide

- Safe Vitamin B3 from rice bran
- Whitening functional ingredient



FRENCH RIVIERA ROSE

YELLOW AMPOULE

1. Vit A

- Skin elasticity
- Sebaceous gland control
- Prevent skin problems

2. Collagen

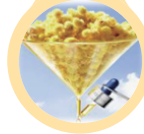
- Excellent skin affinity and moisturizing
- Skin elasticity and Anti-wrinkle

3. Immortelle Oil

- Golden oil which extracted from Immortelle flowers to maintain her beauty
- Only 1 liter of essential oil is extracted from 1 ton of Immortelle flowers
- An immortal flower

4. Adenosine

- Wrinkle-improving ingredient
- Anti-inflammation, wound healing
- Promoting skin elasticity



IMMORTELE

Belleza care

SKIN BOOSTER AMPOULE



What is SKIN BOOSTER?

SKIN BOOSTER is a powerful, effective toner that allows the rest of your skin care products to absorb better, which enhances the overall effectiveness of your routine. Typical toners are designed to set your pH balance and hydrate, but the skin booster does all of that plus preps your skin by clearing away dead skin cells. A skin booster enhances the absorption of the next step in your routine, which is typically a treatment product or a moisturizer.



KEY INGREDIENTS






TREATMENT

- Initially a course of 6-8 sessions are advised every 10~15 days.
- 4mm needle, 2.5~3mm depth, 1cm of interval.
- Use whole vial on the same day.

youth and beauty

Thalia^{Plus+}fill

	THALIAfillPlus+ Soft	THALIAfillPlus+ Medium	THALIAfillPlus+ Hard
			
Composition	HA 20mg/ml Lidocaine0.3%	HA 20mg/ml Lidocaine0.3%	HA 20mg/ml Lidocaine0.3%
Injection Layer	Dermis	Subcutaneous	Deep Subcutaneous
Recommended Indications	Superficial Lines; Crow's Feet, Forehead lines, Neck Wrinkles	Mid/Deep Folds ; NasolabialFolds, Lips, Cheeks, Chin	Deep Folds / Augmentation ; Face Contouring Nose, Cheeks
Syringe Volume	1.0ml	1.0ml	1.0ml
Needle Size	30G	27G	25G
Crosslinking Agent	BDDE(1,4 ButaneDiolDiglycidylEther)		
Duration	12-18 months		

What is THALIAfillPlus+?

Thalia plus+ is named after the goddess of beauty and youth.

Thalia has 2 types of products, and each type has 3 different uses. Thalia will gently fill your beauty, and lead you to a phenomenal result.

THALIAfillPlus+ Characteristic

HA Conc:20mg/ml
Monophasic gel

BDDE Crosslinked
(BDDE: 1.4-butanediol
diglycidylether)
Residual BDDE:
not more than 2ppm

Injection Force:
not more than 25N
Extrusion Force
(with 30G needle):
Soft-25~34N
Medium-35~44N
Hard-45~70N

BDDE Residue is under standard value = Low chance of Allergy, Hypersensitivity

MONOPHASIC

Perfect Monophasic Product
Ideal Monophasic product manufactured by using special grinding machine, Consistent Injection. (Product has uniformity)

-Soft, uniform gel type, easier to mold to achieve 'natural result'



Biphasic Filler



THALIAfillPlus+

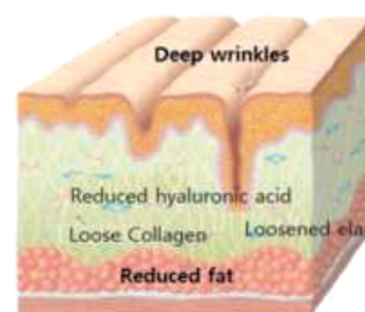
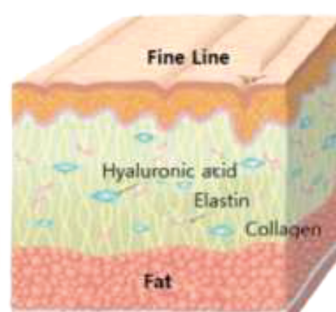
HYALURONIC ACID

Polysaccharide

Occurs naturally in the skin and other tissues as space-occupiers of the extra-cellular matrix (ECM)

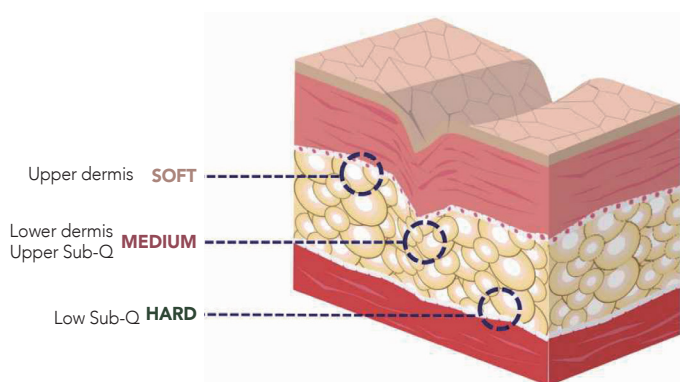
Ubiquitous across animal species (Nonimmunogenic)

The capacity to bind water up to 1000 times its mass.



THALIAfillPlus+ EFFECT

- High-Density Tapping Process (h-DTP)
-Increases elasticity through physical crosslinking
- High viscoelasticity allows to maintain good volume for a long duration

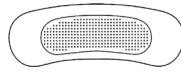


Brand Name	Type	Composition		Syringe Volume	CE	License name
<small>youth and beauty</small> Thalia fill	Soft	HA20mg /ml	None Lidocaine	1.0ml	X	Export permission
	Medium	HA20mg /ml	None Lidocaine	1.0ml	O	CE
	Hard	HA20mg /ml	None Lidocaine	1.0ml	X	Export permission
<small>youth and beauty</small> Thalia fill <small>Plus+</small>	Soft	HA24mg /ml	Lidocaine 0.3%	1.0ml	X	Export permission
	Medium	HA24mg /ml	Lidocaine 0.3%	1.0ml	X	Export permission
	Hard	HA24mg /ml	Lidocaine 0.3%	1.0ml	X	Export permission

※ The difference between 'THALIAfillPlus+' and 'THALIAfill' is the presence or absence of lidocaine.

BOTOX ALTERNATIVE

—Wrinkle Patch



~Deep Infusion Wrinkle Care System~



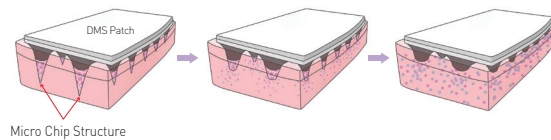
Hyaluronic Acid Chip

What is Micro chip patch ?

Micro chip patches are manufactured from 100% Hyaluronic Acid (HA) components, free from side effects, easy to use at home and excellent for skin tone and effective against wrinkles.

DMS(Dissolving Micro Structure)

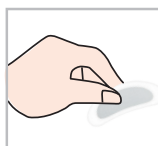
- Our DMS (Dissolving Micro Structure) Technology was developed by applying the latest "Drug Delivery System" in the form of a patch, made of a chip shaped solid structure of biodegradable BIO materials that are safe for the human body.
- Hundreds of Chip shaped microstructures in a narrow area are made of 100% hyaluronic acid without any chemical or additive and functional cosmetic ingredients can be added if necessary.



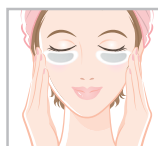
Beauty fill Microneedle Patch effect

Skin care improvement	Specialized medication	Improving skin conditions
<ul style="list-style-type: none">• Reducing wrinkles, improving skin elasticity, anti-aging• Improving pigmentation (stains, freckles)• Hair loss prevention, hair growth• Acne	<ul style="list-style-type: none">• Pain relief (arthritis)• Vaccine, parathyroid hormone (PTH) to treat osteoporosis• Immune-mediated skin diseases• Insulin patch	<ul style="list-style-type: none">• Botox• Fillers: rejuvenation in skin spots• Lipolysis: removal of lower eyelid fat• Alopecia areata (spot baldness)• Improving inflammatory skin disorders• Removing corns and warts

HOW TO USE



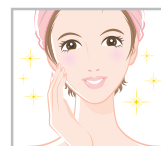
In the dry state after cleansing, remove the protective tape (white) in the way that the micro chip are not touched.



Apply over the area of concern, for example your under eyes or where your smile lines are, and gently press down for 10 seconds.



Remove them after two hours or when you wake up next morning.



Remove patches and soften skin texture.



2013, 1719, Gyebaek-ro, Jung-gu, Daejeon, Republic of Korea
E. zenskorea@zensinternational.com T. 82-1600-3056
www.zensinternational.com

